

BNP PARIBAS WEALTH MANAGEMENT

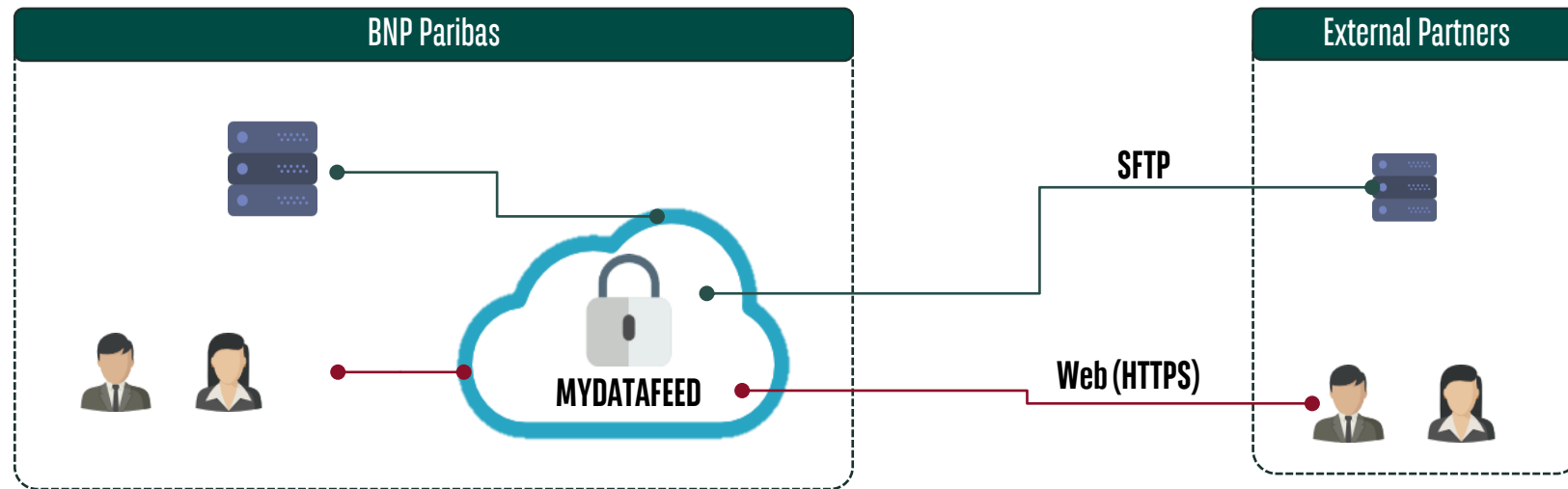
# myDataFeed Getting Started



**BNP PARIBAS**  
**WEALTH MANAGEMENT**

The bank  
for a changing  
world

# MYDATAFEED OVERVIEW



With myDataFeed, you can choose to download files:

- Via **SFTP**
- Via **Web Browser**



# GENERAL INFORMATION



## ACCESS LINK

### SFTP

[sftp.app.mydatafeed.bnpparibas](https://sftp.app.mydatafeed.bnpparibas)

### Web Browser

<https://app.mydatafeed.bnpparibas>



## AUTHENTICATION

- **Login:** your user id that was defined in the agreement
- For enhanced security, **SSH key authentication** is mandatory for all SFTP connections.

### *For web browser connection*

- **Password:** the one you defined
- **Additional TOTP authentication :** the 6-digit code provided by a mobile application which supports the TOTP standard - RFC 6238 (Microsoft Authenticator, Google Authenticator, ...)



## CONNECTION

- **60-day inactivity:** account is deactivated
- **2 incorrect password:** account is locked
- **90 days:** password **expires**

01

---

# FIRST AUTHENTICATION

---

# FIRST AUTHENTICATION

1) Click on « Activate account » from the email you received



## Welcome to "MYDATAFEED"

Your account has been created.

To start using the system, please activate your account.

[Activate account](#)

2) Define your password (1st authentication factor)



## Set password

New password

Confirm new password

- Numeric characters required: 1
- Lowercase characters required: 1
- Uppercase characters required: 1
- Special characters required: 1 ⓘ
- Minimum characters required: 16

[Set password](#)

[English](#) [Getting Started?](#) [Contact Us](#)

3) Click on "Return to sign in"



Your password has been set.

[Return to sign in](#)

[English](#) [Getting Started?](#) [Contact Us](#)

# FIRST AUTHENTICATION

4) Enter your email. Click on « Next »



Sign in

Username or email

Next

[Sign in with ITG WebSSO](#)

5) Enter your password and click on «Sign In »



Sign in

Username or email

bnpp

[Edit](#)

Password

Show

Sign in

[Forgot password?](#)

6) Setup your 2FA (2<sup>nd</sup> authentication factor) using an authenticator app \*

## Set up two-factor authentication

1. Install an authenticator app (such as [Google Authenticator](#), [Microsoft Authenticator](#), [Authy](#)) on your device.
2. Scan the QR code in the authenticator app with your device. If you can't scan the code, copy the secret key and enter it into your account in the authenticator app.



[Show secret key](#)

3. You will receive a 6-digit verification code in your authenticator app that changes every 30 seconds. Enter this code in the input field below.

Submit

\* Any mobile authenticator supporting TOTP algorithm standard (RFC 6238) is compatible: Microsoft Authenticator, Google Authenticator, ...

# TERMS OF SERVICE

Once you have authenticated successfully to the system, you must accept Terms of Service to proceed further:

Click to view the Data Protection Notice before accepting the Terms of Service

BNP PARIBAS WEALTH MANAGEMENT | MY DATA FEED STAGING

Terms of service

<https://wealthmanagement.bnpparibas/content/wmpublicsite/mydatafeed/terms-and-conditions.html>

I have read and accept the terms of service

Sign in

TERMS-AND-CONDITIONS

## Data Protection Notice - My Data Feed

Your personal data is processed in accordance with the data protection regulations of the jurisdiction where your contract was executed. For further details, please refer to the applicable notice below:

- For Germany: <https://wealthmanagement.bnpparibas/de/de/datenschutzrichtlinie.html>
- For Hong Kong: <https://apac.bnpparibas/en/asia-pacific-data-protection-notice/>
- For Singapore: <https://apac.bnpparibas/en/asia-pacific-data-protection-notice/>
- For Switzerland: [Download the document](#)

Ihre persönlichen Daten werden gemäß den Datenschutzbestimmungen des Landes verarbeitet, in dem Ihr Vertrag abgeschlossen wurde. Weitere Informationen finden Sie in der jeweiligen Datenschutzerklärung für Ihr Land:

- Deutschland: <https://wealthmanagement.bnpparibas/de/de/datenschutzrichtlinie.html>
- Hongkong: <https://apac.bnpparibas/en/asia-pacific-data-protection-notice/>
- Singapur: <https://apac.bnpparibas/en/asia-pacific-data-protection-notice/>
- Schweiz: [Download the document](#)

BNP PARIBAS WEALTH MANAGEMENT | COOKIE SETTINGS

02

---

# SET UP YOUR SFTP CONNECTION

---

# SFTP PRE-REQUISITES

In order to set up a SFTP connection with myDataFeed, following pre-requisites must be met:

- You have an **account** created for you in myDataFeed and received the activation email
- You have an **SFTP client** which version should not be too old (eg. Filezilla, WinSCP)
- You have generated **public/private keys** or will use myDataFeed to generate those keys
- You have opened **flows** between your systems and our public IP address on the dedicated port\*

\* BNP Paribas does not need to open flows, we accept all IP address

# STEP 1: AUTHENTICATION

*If this is your first connection, please refer to the "First Authentication" section*

1) Connect to <https://app.mydatafeed.bnpparibas>  
Enter your email. Click on « Next »

2) Enter your password and click on  
«Sign In »

3) Enter the 6-digit code you see in your  
authenticator app.



Sign in

Username or email

Next

[Sign in with ITG WebSSO](#)



Sign in

Username or email

bnpp

[Edit](#)

Password

Show

Sign in

[Forgot password?](#)

Additional authentication required

Open your authenticator app and enter the 6-digit code provided in the input field below.

Passcode

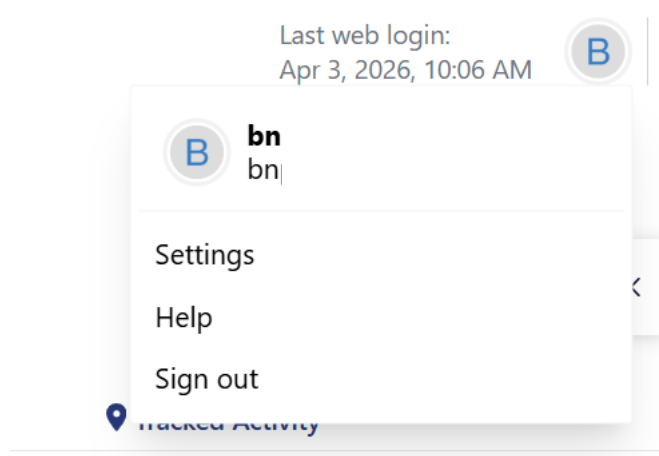
Verify

Remember this device

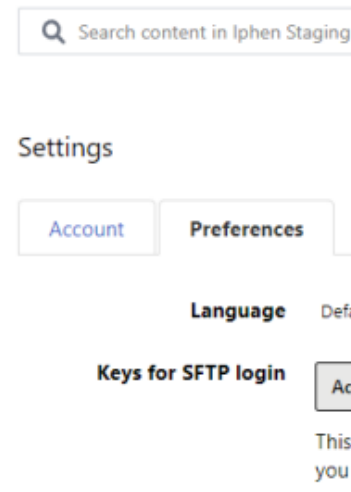
[No access to device or authenticator app? Please contact your administrator for assistance.](#)

## STEP 2: MYDATAFEED SFTP ACCOUNT SETTINGS

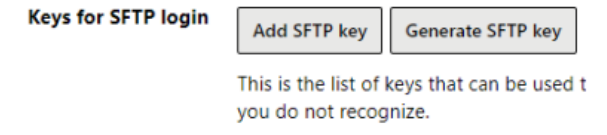
1) Click on "Settings" from the top right corner



2) Click on "Preferences" to access SFTP settings



3) Add/Generate keys



## STEP 3: MYDATAFEED SFTP ACCOUNT SETTINGS

Please note :

- \* The public key must be pasted with all its elements, including headers and footers  
Public keys must be imported in **an OpenSSH format** (ex: `ssh-rsaAAAAB3NzaC1yc2EAAAADAQABAAQCrWhzfu0QC5+Ko7bFjueRvSSo+[...]`)”
- \*\* myDataFeed does not store the private key. Once generated and displayed, it is your responsibility to keep it safe outside myDataFeed

4) To add a key you generated on your end\*

5) To generate a private\*\* and a public key with myDataFeed.  
To secure your private key, we recommend setting up a passphrase.

6) Securing your new private key, in case of 5

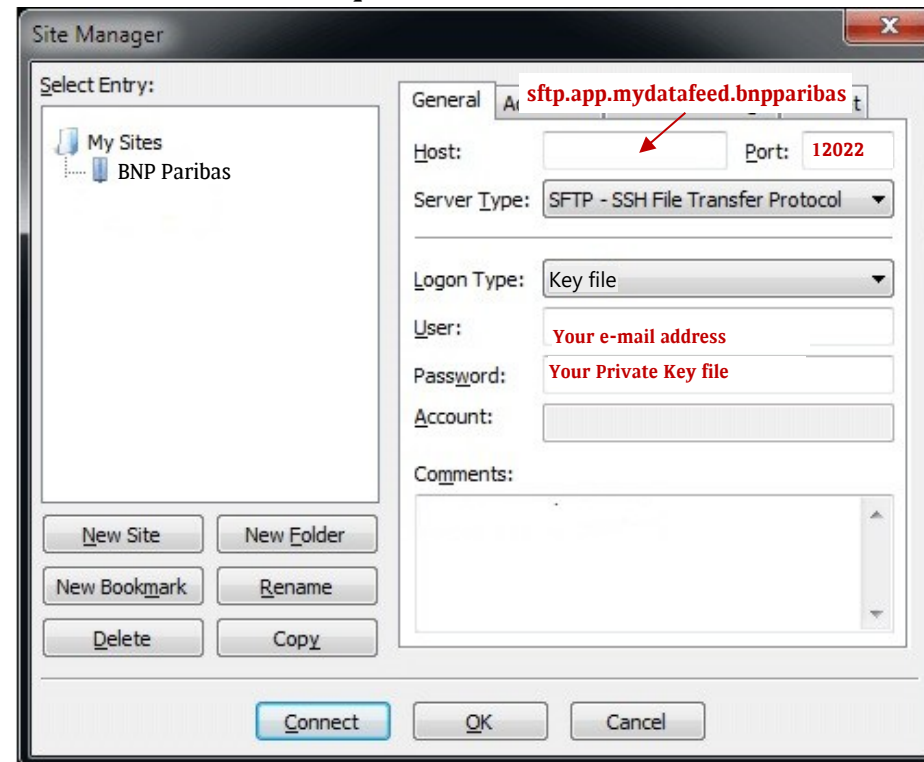
## STEP 4: SFTP SETUP

Your SFTP Client must be configured with the following :

- **Host:** sftp.app.mydatafeed.bnpparibas
- **Port number :** 12022
- **Your e-mail address**
- Your **private key** file

All public IP addresses are accepted; no additional configurations are required on BNP Paribas's side.

*Example based on FileZilla*



03

---

# HOW TO USE MYDATAFEED VIA A WEB BROWSER

---

# AUTHENTICATION

*If this is your first connection, please refer to the "First Authentication" section*

1) Connect to <https://app.mydatafeed.bnpparibas>  
Enter your email. Click on « Next »



Sign in

Username or email

Next

[Sign in with ITG WebSSO](#)

2) Enter your password and click on  
«Sign In »



Sign in

Username or email

bnpp

[Edit](#)

Password

Show

Sign in

[Forgot password?](#)

3) Enter the 6-digit code you see in your  
authenticator app.

Additional authentication required

Open your authenticator app and enter the 6-digit code  
provided in the input field below.

Passcode

Verify

Remember this device

[No access to device or authenticator app? Please contact  
your administrator for assistance.](#)

# HOME PAGE

**Home page**  
Click here to return to myDataFeed home page

**Search full-indexed content**  
Use keywords and wildcards to search for files and folders

**Profile**  
Change your Password & Custom profile preferences, such as preferred languages ...



🔍 Search content in MYDATAFEED Ctrl + k

Last web login: Apr 7, 2026, 10:20 AM B

- ALL FILES
- Recents
- Favorites
- Contacts

## MYDATAFEED DEV

<input type="checkbox"/> Name	Updated	Size	Tracked Activity
<input type="checkbox"/> EWM_1	Apr 3, 2026	1 item	

Information & Tracked Activity <<

**Information & Tracked Activity**  
See audit trail for the selected folder, and list of users having access to this folders

**Favorites**  
Add a folder or a file to your list of favorites

**Workspaces**  
Available workspaces are displayed here

**Files and folders shortcuts**  
Access to files and folders shared with you, as well as shortcuts to favorites

# DOWLOAD FILES AND FOLDERS


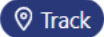


**MYDATAFEED DEV**

**Download Files & Folders**  
Select the file or folder you want to download and click on « Download »

Information & Tracked Activity <<

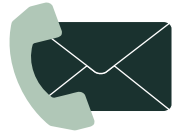
Download

EWM\_1 ✕

<input checked="" type="checkbox"/>  EWM_1	Apr 3, 2026	1 item	 Track	 
---	-------------	--------	---	---

- ☆ Favorite
- 🔔 Manage notifications
- Download

## NEED HELP ?



Contact us at [mydatafeed.support@bnpparibas.com](mailto:mydatafeed.support@bnpparibas.com)

BNP PARIBAS

Thank  
You



**BNP PARIBAS**  
**WEALTH MANAGEMENT**

The bank  
for a changing  
world